



Performance Review of the Water Services Maintenance Trust Fund

A new, county-level financial model for rural water systems

Executive Summary (November 2017 – October 2018)

- Performance-based contracts incubate local maintenance service providers
- Maintenance service providers apply the FundiFix model
- 140 rural piped schemes and handpumps registered in Kitui and Kwale counties
- Initial investments from rural water users with private sector funds
- Sustainability requires hybrid finance with institutional coordination

76,557 rural people paying for
reliable water services

↑ 138%
year-on-year growth

112
handpumps

28
piped schemes



25,000
children in 74 schools



95% of 436 repairs
completed in 3 days
99% of handpump repairs
completed in 3 days



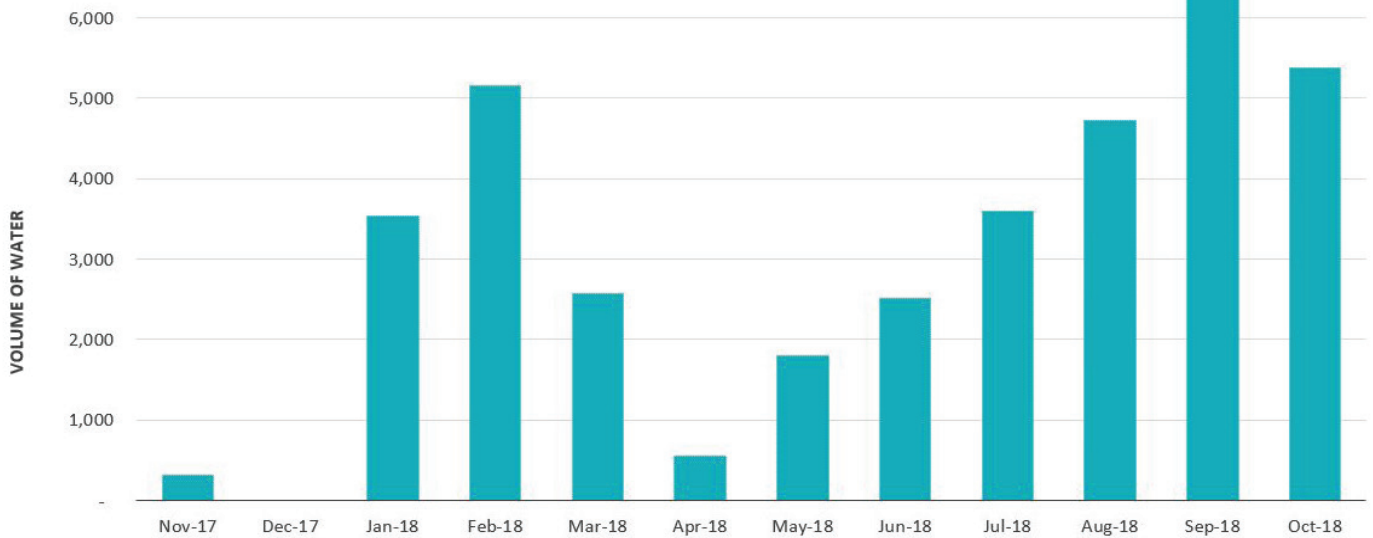
72 million
litres of water supplied in
the last 12 months



Rural water users have paid
Ksh 0.97 million

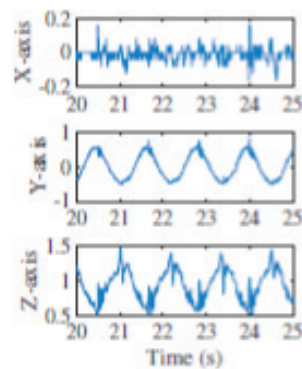
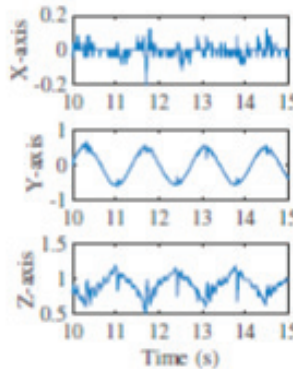
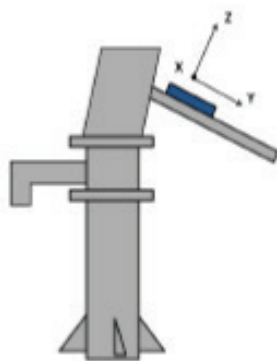
Seasonal demand for rural water in Mwingi North, Kitui County (cubic meters per month)

Source: Miambani Ltd.



Key findings

1. Higher collection efficiency for handpumps (41%) than piped schemes (21%)
2. Low working ratio of 12-18% needs to increase over time
3. Smart monitoring unlocks performance-based finance



Founding Trustees:

Professor Albert Mumma, Joy Busolo, Eng. Mike Thomas, Professor Rob Hope

Secretariat contact:

Anne Mbiu - anne.mbiu@fcgkenya.co.ke | +254 712 520174